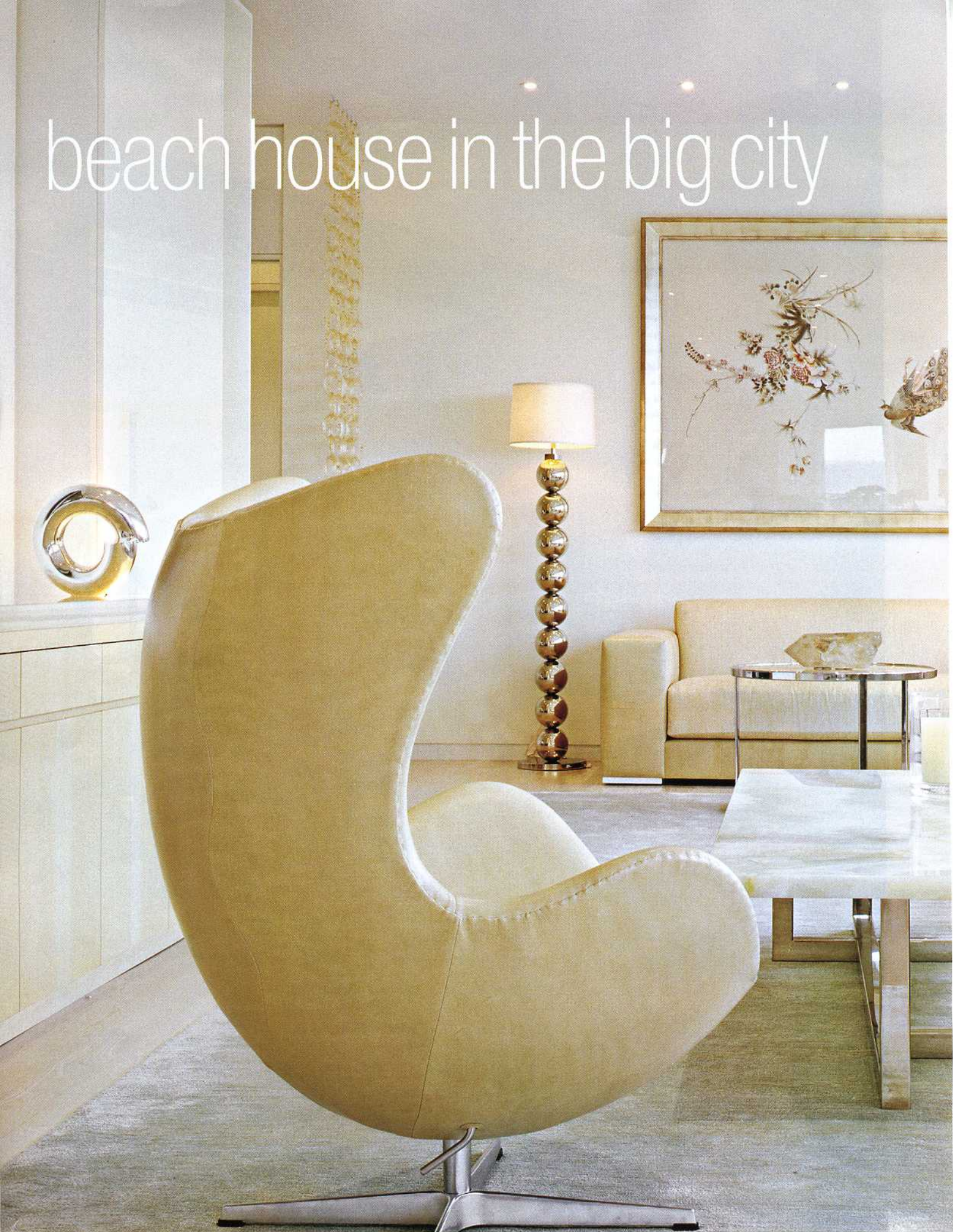


INTERIOR DESIGN[®]

SEPTEMBER
2007

We ♥ New York

beach house in the big city



For a Chelsea triplex nowhere near the sea, Eric Gartner and Charles Allem played with sand tones and sunlight



text: jane margolies photography: frank oudeman

Previous spread: At a Chelsea triplex by SPG Architects and CAD International, custom sofas covered in silk chenille and a pair of lambskin-upholstered Arne Jacobsen chairs define the living area. Floor lamps with a polished-nickel finish flank a framed Ming dynasty silk tapestry, while a custom silk rug softens the bleached-ash floor.

Below: Onyx tops the living area's round side table and cocktail table.

Opposite: Todd Rugee's Murano glass chandelier was customized to extend the full length of the custom dining table's high-gloss lacquered top.

Eric Gartner has never been the white-on-white type. A partner at SPG Architects, he's wont to describe all-white spaces as "abstract," and he dismisses apartments that "look like a spray gun was taken to them." So Gartner was dumbfounded at his first meeting with Rungravee Napadol and her husband, Larry Weinman, who were about to close on a triplex penthouse in a 1906 building in Chelsea. After sitting through Gartner's initial presentation and nodding appreciatively at the projects in his portfolio, Napadol turned to him and asked a provocative question: "What about white?"

A Thai-born jewelry designer, she knows a thing or two about white: She specializes in diamonds. And she sought the pale airiness of a beach house for her urban aerie. And so, Gartner says, "I had to find out how to do white *my way*." As is clear the moment you step through the triplex's →







front door, *his* way was to layer a variety of pale materials: bleached ash for flooring, figured anigré for kitchen cabinets and paneling, smooth and textured limestone for wall tile. It all adds up to an intriguingly tactile envelope that's far from spray-painted—and also a far cry from the space that Gartner initially encountered.

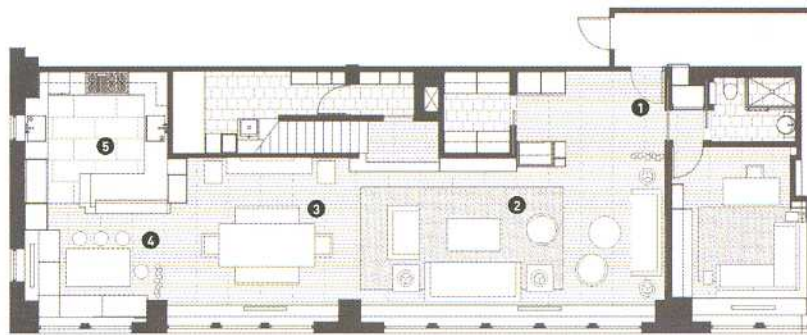
The interior started out as 3,600 square feet of raw, gaping space. (The previous owner had merged apartments on the 17th, 18th, and 19th floors, gutted all three, and divided them again, into two triplexes). While ample in size, this apartment was long and none too wide, with an awkward staircase in the middle. By removing that obstruction and tucking a new stair in back, Gartner was able to make the most of the narrow dimensions.

On the lowest floor, the longest of the three, he let the space flow rather than erecting walls for boxy rooms. The kitchen—with its peekaboo cabinetry—shares one end with a breakfast nook. Then come the dining and living areas. These public spaces line up on the apartment's south wall, with furniture groups defining each. Under the parade of windows, clean-lined lacquered cabinetry encloses heating and air-conditioning units. Nothing gets in the way of the drop-dead view, which embraces the Statue of Liberty and the Hudson River.

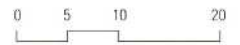
The middle level houses just a guest room and bath and a meditation room, a place where Napadol reflects before bedtime. On the top floor →

Opposite: The breakfast nook's marble-topped table is surrounded by banquettes and stools covered in custom shagreen.

Below: Bleached anigré veneers the kitchen's custom cabinetry, equipped with stainless-steel pulls. The counters and backsplash are a crushed-glass composite, which is easy to clean and impervious to stains.



- 1 ENTRY
- 2 LIVING AREA
- 3 DINING AREA
- 4 BREAKFAST NOOK
- 5 KITCHEN



Below: The three-story staircase's bleached-ash steps rise alongside a wall clad in alternating squares of smooth and linen-textured limestone.

Opposite: Acid-etched glass fronts the stairwell's 20-foot-high cold-cathode lighting tube.



is the master suite, a little pavilion in the sky. Gartner pulled out all the stops for the bathroom, using snow-white Thassos marble for the vanity counter and floor and tracking down white onyx with minimal veining for the walls. He also repositioned the north-facing windows above the tub, so they perfectly frame the Empire State Building. The bedroom offers access to the suite's 700-square-foot private terrace. Here, Gartner turned an abandoned stairway bulkhead into a freestanding gym with full-height windows and an orange rubber floor. Then he attached an outdoor shower, an *ipé* enclosure that truly gives this city dwelling a beach-house feel.

While construction was under way, Napadol happened to meet CAD International principal Charles Allem at a Colin Cowie party. "Let me do your *movie*," Allem purred in her ear. Known for glam, he introduced it in tasteful doses—he stuck to a pale palette for furniture and textiles and made sure everything was luxurious to the touch. For the living area, he chose sand-colored silk chenille sofa upholstery, taupe silk Tibetan rugs, and two of Arne Jacobsen's Egg chairs covered in lambskin. Shagreen appears on the breakfast nook's banquette, which wraps two sides of a table topped by a generous square slab of marble. Sparkle and color play their parts, too. In the living area, floor lamps have bases made from stacks of polished-nickel spheres. Strands of Murano glass balls cascade from the chandelier in the dining area, defining without obstructing. In the master bedroom, the faux-fur throw on the bed and the tangerine leather on the desk chair enliven the shades-of-white palette, which Gartner has grown increasingly fond of.

"The white takes on the colors of the atmosphere," enthuses the architect, who worked with Napadol to come up with just the right tones for wall paint, adding a touch of cream →





Above: A faux-fur throw covers the custom leather-upholstered bed in the master suite.

Opposite: A pair of sliding mirrors framed in stainless steel are mounted above the Thassos marble vanity counter in the master bathroom.

and a pearly finish for the top and bottom levels, a drop of pink for the middle one. "As the day wears on and the sky changes, the apartment changes, too," he adds—sounding like nothing less than a convert. 🏡

PROJECT TEAM (SPG ARCHITECTS): JOHN WATSON; MICHU YANIGASHITA.

CHAIRS (LIVING AREA): FRITZ HANSEN THROUGH TROY. CUSTOM RUG: MARC PHILLIPS. CIRCLE LAMP: THROUGH MOSS. CUSTOM CREDENZA TOP: PLEXI-CRAFT QUALITY PRODUCTS CORP. ROUND SIDE TABLE: MINOTTI THROUGH DDC. WINDOW SHADE FABRIC (LIVING, DINING AREAS, BREAKFAST NOOK), BENCH FABRIC (DINING AREA): NANCY CORZINE. CUSTOM SOFAS (LIVING AREA), CUSTOM BANQUETTE (BREAKFAST NOOK), CUSTOM BED (BEDROOM): UPHOLSTERY UNLIMITED. CHAIR UPHOLSTERY, COCKTAIL TABLE, SQUARE SIDE TABLE (LIVING AREA), STOOL UPHOLSTERY (BREAKFAST NOOK), BED UPHOLSTERY, CURTAIN FABRIC (BEDROOM): J. ROBERT SCOTT. TABLE LAMP, FLOOR LAMPS (LIVING AREA), TABLE LAMP, DESK (BEDROOM): LORIN MARSH. SCONCES, CUSTOM CHANDELIER (DINING AREA): BOYD LIGHTING. CUSTOM TABLE, BENCHES, CREDENZA, MIRROR: BRUETON FURNITURE. TABLETOP MATERIAL (BREAKFAST NOOK): ABC STONE TRADING. CUSTOM BANQUETTE UPHOLSTERY, STOOL UPHOLSTERY (BREAKFAST NOOK), CHAIR UPHOLSTERY (BEDROOM): EDELMAN LEATHER. SINK (KITCHEN): BLANCO. SINK FITTINGS: DORNBRACHT. CABINET HARDWARE: HÄFELE. COUNTER, BACKSPLASH, PANEL MATERIAL: CHELSEA ARTS TILE & STONE. WALL TILE (STAIRWELL): COVERINGS ETC. (TEXTURED); STONE SOURCE (SMOOTH). STEP LIGHTS: BEGA. CATHODE TUBE: ARCHITECTURAL CATHODE LIGHTING. CUSTOM CHAIR (BEDROOM): AUGUST STUDIOS. SCÖNCE: PHOENIX DAY. CUSTOM CURTAINS (BEDROOM), CUSTOM WINDOW SHADES (BATHROOM): LA REGENCE. ROUND MIRRORS (BATHROOM): VALLI & VALLI. SINKS: KOHLER CO. SINK FITTINGS: KWC. CUSTOM DOORS, WINDOWS: SKYLINE WINDOWS. PAINT: BENJAMIN MOORE & CO. MILLWORK: JB WOODCRAFT. STRUCTURAL ENGINEER: HAGE ENGINEERING. GENERAL CONTRACTOR: ELJIN CONSTRUCTION.



bioS



Area Architecture

"D&D, PDC, Etc.," page 258

principal: Henry Goldston, AIA.

principal: Walt Thomas, AIA.

completed projects: CB Richard Ellis Investors, Stone Meyer Genow Smelkinson & Binder, and Bryan Cave, all in Los Angeles; public areas at office and apartment buildings in New York.

current projects: O'Melveny & Myers and Foley & Lardner in L.A.; an office building's lobby in New York.

honors: IIDA Calibre Awards; Architectural Woodwork Institute Award of Excellence.



past: Before founding Area in 1991, both principals worked in Gensler's Houston office.

present: Each now lives in the Hollywood Hills.

550 South Hope Street, Los Angeles, CA 90071; 213-623-8909; areaarchitecture.com.



CAD International

"Beach House in the Big City," page 284

principal: Charles Allem.

completed projects: A penthouse in Miami Beach; an apartment building and apartments in New York.

current projects: An apartment in Palm Beach, Florida; W Macao Studio City hotel in China; two

restaurants in the Hotel Miramar in Hong Kong.

stays: Allem owns a pied-à-terre in New York's TriBeCa.

plays: An opera fan, he frequents Lincoln Center.

127 NE 40th Street, Miami, FL 33137; 305-438-9757; cadinternational.com.



Clodagh

"Making Landmarc a Landmark," page 294

principal: Clodagh.

completed projects: Sasanqua spa on Kiawah Island, South Carolina; White Horses Spa at the Lodge at Doonbeg Golf Club in Ireland; Tufenkian Heritage Hotels and restaurants in Armenia.

current projects: A house in East Hampton, New York, for Landmarc owner Marc Murphy; Miraval Village at Windmark Beach in Port St. Joe, Florida; W Hotels in Florida and Puerto Rico.

honors: IIDA Pioneer of the Industry.

sweet charity: Clodagh provides assistance to Kenya's Samburu tribe through the Thorn Tree Project.

sweet success: Her studio has raised in excess of \$100,000 this year.

670 Broadway, 4th Floor, New York, NY 10012; 212-780-5300; clodagh.com.



Gensler

"Green Machine," page 312

managing principal: Robin Klehr Avia, FIIDA.

completed projects: Swiss Reinsurance Company, ING Direct Café, Debevoise & Plimpton, and Skadden, Arps, Slate, Meagher & Flom, all in New York.

current projects: New York Times; American Red

Cross of Greater New York.

honors: IIDA NY Lester Dundes Interior Design Awards; AIGA Environ-



mental Graphic Design Award.

design director: Mark Morton, IIDA.

completed projects: International Center for Photography, Judith Leiber boutique, Debevoise & Plimpton, and Simpson Thacher & Bartlett, all in New York.

current projects: Bank of America and HBO in

New York.

honors: Society of American Registered Architects Awards of Excellence.

location, location, location: Avia calls Rockefeller Center the "Center of the Universe!"

location, location, location: Morton admits, "I like to see how many tourist photos I can be in."

1230 Avenue of the Americas, 1500, New York, NY 10020; 212-492-1400; gensler.com.



Highland Associates

"The Fashion Equation," page 302

principal, design director: Glenn Leitch, AIA.

previously seen in: July 2007.

228 East 45th Street, New York, NY 10017; 212-681-0200; highlandassociates.com.



Amy Lau Design

"The Fashion Equation," page 302

founder, principal: Amy Lau.

completed projects: A house in Bridgehampton, New York; apartments and the Kips Bay Decorator Show House in New York.

current projects: Apartments in New York;

a vignette at the Kohler Co. headquarters in Wisconsin.

summer: To the Elie Tahari opening, Lau wore Diane von Furstenberg.

fall: Her big cool-weather splurge is a vintage Pucci-esque car coat.

185 Varick Street, Suite 500, New York, NY 10014; 212-645-6168; amylaudesign.com.



Lissoni Associati

"The Fashion Equation," page 302

principal: Piero Lissoni.

principal: Nicoletta Canesi.

completed projects: Zanin pastry shop in Milan; Hotel Monaco & Grand Canal in Venice; Al Porto hotel in Zurich; Bentley hotel in Istanbul; Mitsui Garden Hotel Ginza in Tokyo; Cassina showroom in Paris; Boffi showrooms worldwide; residences in Europe and Asia; a 120-foot yacht; products for Cappellini, Kartell, and Knoll.

current projects: Shangri-La Miami hotel; Mandarin Oriental Dellis Cay hotel in Turks and Caicos,

British West Indies; a hotel in Jerusalem; Living Divani headquarters in Milan; a 210-foot yacht.

honors: Red Dot Award; Chicago Athenaeum Good Design Awards; World Superyachts Best Newcomer of the Year Award.

then: As a teenager, Lissoni used to wear Levi's and military jackets.

now: Canesi sometimes wears Elie Tahari to the office.

9 Via Goito, 20121 Milan, Italy; 39-02-6571-942; lissoniassociati.it.



SPG Architects

"Beach House in the Big City," page 284

partner: **Eric Gartner.**

completed projects: Bill Blass showroom and residences in New York; a house in Fairfield, Connecticut.

current projects: Houses in Dutchess County, New York; Asheville, North Carolina; and Puerta Jimenez, Costa Rica. A community center, health clinic, and nursery school in Banda, Rwanda.

honors: AIA New York awards; Bamboo Living International Bamboo Building Design Competition.

fantasy: Gartner would love to live in Rome.

reality: He owns a one-bedroom in New York's West Village.

136 West 21st Street, New York, NY 10011; 212-366-5500; spgarchitects.com.



Studio Arthur Casas

"World View," page 248

principal: **Arthur Casas.**

completed projects: Hotel Emiliano in São Paulo, Brazil; Alexandre Herchovitch boutique in Tokyo; boutiques and residences in New York, Paris, and Rio de Janeiro and São Paulo, Brazil; furniture and silverware for Espasso.

current projects: Hotel Emiliano in Rio de Janeiro; C restaurant in Chicago; residences in Paris, New York, and Huntington, New York.

urban: "New York is the center of the universe."

rural: Casas takes refuge in the flora and fauna of the Brazilian coastline.

192 Lexington Avenue, 17th Floor, New York, NY 10016; 212-686-4576; arthurcasas.com.

photographers

in this issue

Peter Aaron ("D&D, PDC, Etc.," page 258), Esto, 222 Valley Place, Mamaroneck, NY 10543; 914-698-4060; esto.com.

Eric Laignel ("World View," page 248; "Making Landmark a Landmark," page 294; "Green Machine," page 312), ericlaignel@hotmail.com.

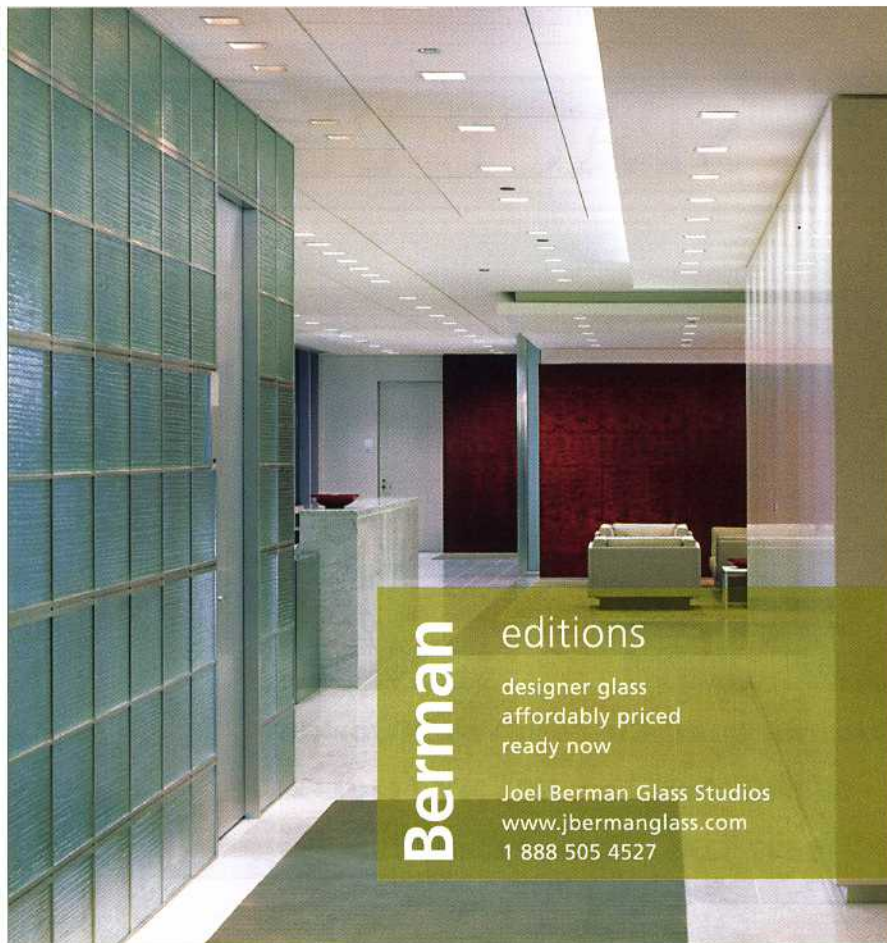
Frank Oudeman ("Beach House in the Big City," page 284), 646-298-8400; frankoudeman.com.

Adrian Wilson ("D&D, PDC, Etc.," page 258; "The Fashion Equation," page 302), 990 Avenue of the Americas, New York, NY 10018; 212-729-7077; interiorphotography.net.

designers in special feature

Laura Bohn Design Associates ("All in a Day's Work," page 266), 345 Seventh Avenue, New York, NY 10001; 212-645-3636; lbda.com.

Thomas Jayne Studio ("All in a Day's Work," page 266), 524 Broadway, 605, New York, NY 10012; 212-838-9080; thomasjaynestudio.com. →



Berman

editions

designer glass
affordably priced
ready now

Joel Berman Glass Studios
www.jbermanglass.com
1 888 505 4527