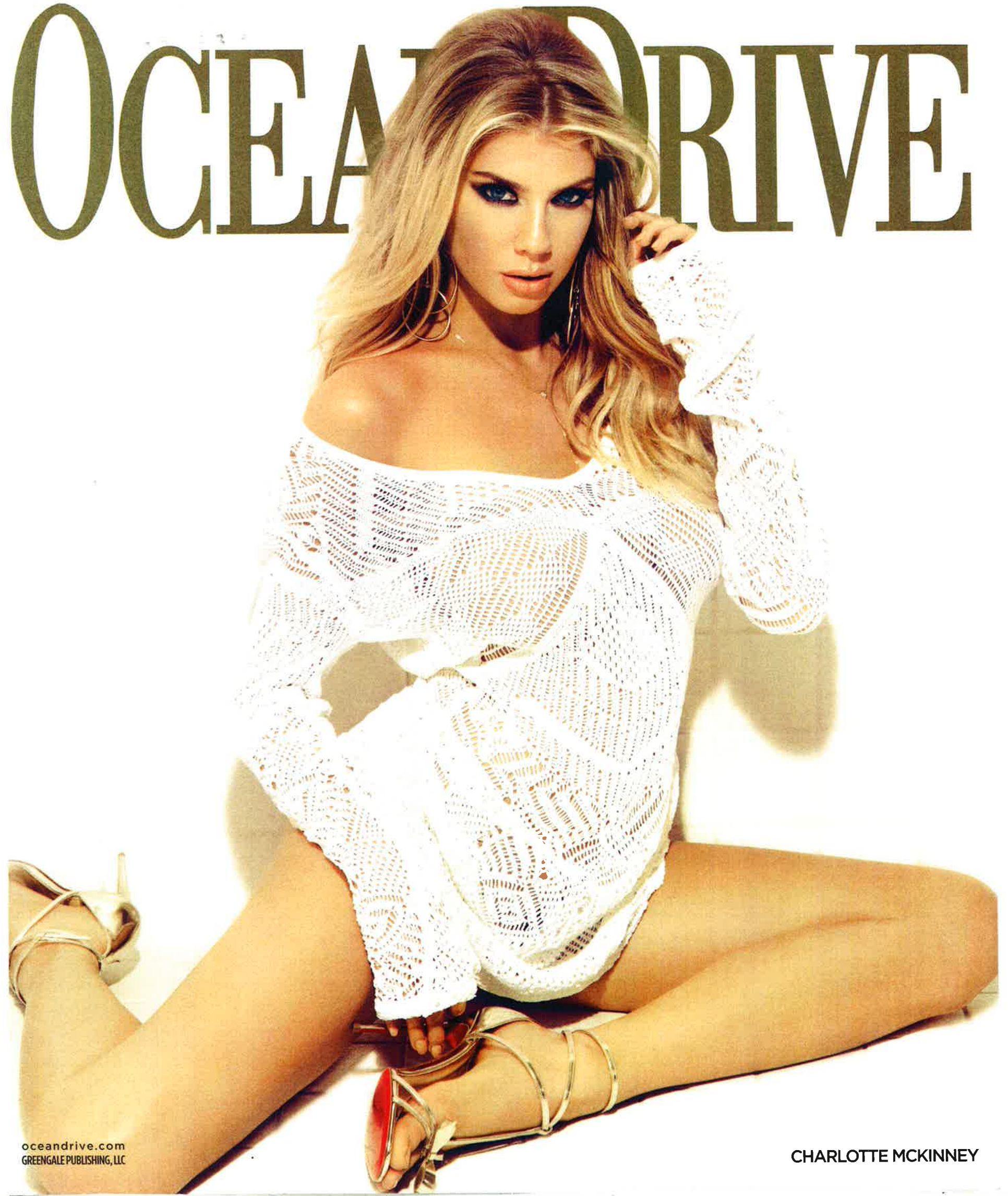
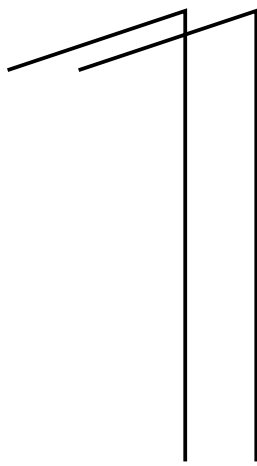


OCEAN DRIVE



oceandrive.com
GREENGALE PUBLISHING, LLC

CHARLOTTE MCKINNEY



ELEVEN ON LENOX

Independent Style in the Heart of South Beach

Conceived as a celebration of the beach house, Eleven on Lenox is a unique collection of 11 luxury residences steps from the Atlantic Ocean, and offering the best of Miami Beach life.

Four-bedroom residences designed throughout by world-renowned Charles Allem. On-site Sales Gallery Coming Soon
1030 15th Street
Miami Beach, FL 33139
305.506.2393

Architecture by internationally recognized Zyscovich Architects. info@11onlenox.com
11onlenox.com

Exclusive spa, fitness and beach club membership.

Starting at \$2.9 Million.

Developed by

SHOMA

Exclusive Sales & Marketing by



ORAL REPRESENTATIONS CANNOT BE RELIED UPON AS CORRECTLY STATING THE REPRESENTATION OF THE DEVELOPER. FOR CORRECT REPRESENTATIONS, MAKE REFERENCE TO THE DOCUMENTS REQUIRED BY SECTION 718.503, FLORIDA STATUTES, TO BE FURNISHED BY THE DEVELOPER TO A BUYER OR LESSEE. PRICES, PLANS AND SPECIFICATIONS ARE SUBJECT TO CHANGE WITHOUT NOTICE. THIS IS NOT INTENDED TO BE AN OFFER TO SELL NOR A SOLICITATION OF OFFERS TO BUY A UNIT WHERE SUCH OFFERS OR SOLICITATIONS ARE PROHIBITED BY LAW. ADDITIONAL RESTRICTIONS MAY APPLY. THE DEVELOPER RESERVES THE RIGHT TO MODIFY ANY OF THE PLANS FOR THE DEVELOPMENT DESCRIBED OR DEPICTED HEREIN AT ANY TIME IN DEVELOPER'S SOLE DISCRETION AND WITHOUT NOTICE. THESE MATERIALS, AND THE FEATURES AND AMENITIES DESCRIBED AND DEPICTED HEREIN, ARE ARTIST'S CONCEPTUAL RENDERINGS, BASED UPON CURRENT DEVELOPMENT PLANS, WHICH ARE SUBJECT TO CHANGE WITHOUT NOTICE. NO GUARANTEES OR REPRESENTATIONS WHATSOEVER ARE MADE THAT THE FEATURES, AMENITIES AND FACILITIES, AND EXISTING OR FUTURE VIEWS OF THE PROJECT AND SURROUNDING AREAS, DEPICTED BY ANY SUCH ARTIST'S RENDERINGS OR OTHERWISE DESCRIBED HEREIN, WILL BE PROVIDED, OR, IF PROVIDED, WILL BE OF THE SAME TYPE, SIZE, LOCATION OR NATURE AS DEPICTED OR DESCRIBED HEREIN. ALL DIMENSIONS ARE APPROXIMATE AND ALL FLOOR PLANS AND DEVELOPMENT PLANS ARE SUBJECT TO CHANGE. THE FLOOR PLAN DEPICTED HEREIN IS A TYPICAL FLOOR PLAN FOR THE RESIDENCE TYPE INDICATED AND IS PROVIDED FOR INFORMATIONAL PURPOSES ONLY. THE ACTUAL FLOOR PLAN OF THE RESIDENCE MAY DIFFER. ALL FEATURES LISTED FOR THE RESIDENCES ARE REPRESENTATIVE ONLY, AND THE DEVELOPER RESERVES THE RIGHT, WITHOUT NOTICE TO OR APPROVAL BY THE BUYER, TO MAKE CHANGES OR SUBSTITUTIONS OF EQUAL OR BETTER QUALITY FOR ANY FEATURES, MATERIALS AND EQUIPMENT.